

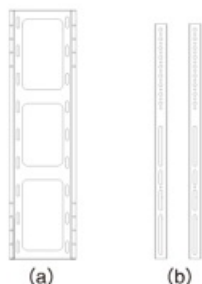
# Wall-Mounted Installation

For the operation video, please refer to [Wall-Mounted - Teams](#)/[Wall-Mounted - Zoom](#).

## Package Contents



MeetingBoard 65/86



Wall-mounted bracket

\*65-inch and 86-inch wall-mounted bracket are different in size and cannot be mixed.



Pen x 4



Security screw x 2 (M5\*100mm)



Screw x 4 (M8\*35mm)

\*For locking the back of the endpoint



Rubber gasket x 5 (φ32)

\*Pad on the back of the endpoint



Expansion bolt x 8 (8\*80mm)

\*For vertical, load-bearing solid wall or concrete wall



Self-tapping screw x 8 (6\*50mm)

\*\*For planks or other reinforced walls

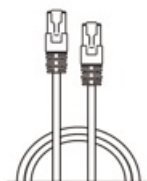


Metal gasket x 8 (φ8\*1.6mm)

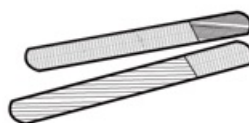
\*For fixing self-tapping screws



3M Power Cable



3M Network cable



Cable Ties



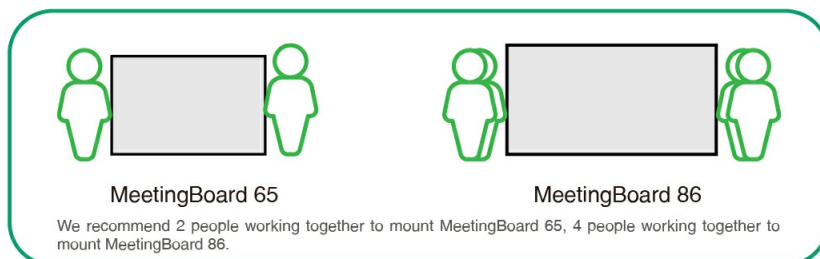
Quick Start Guide (Wall-Mounted)

## Endpoint Installation

Please refer to Install Floor Stand for more information on how to use the floor stand.

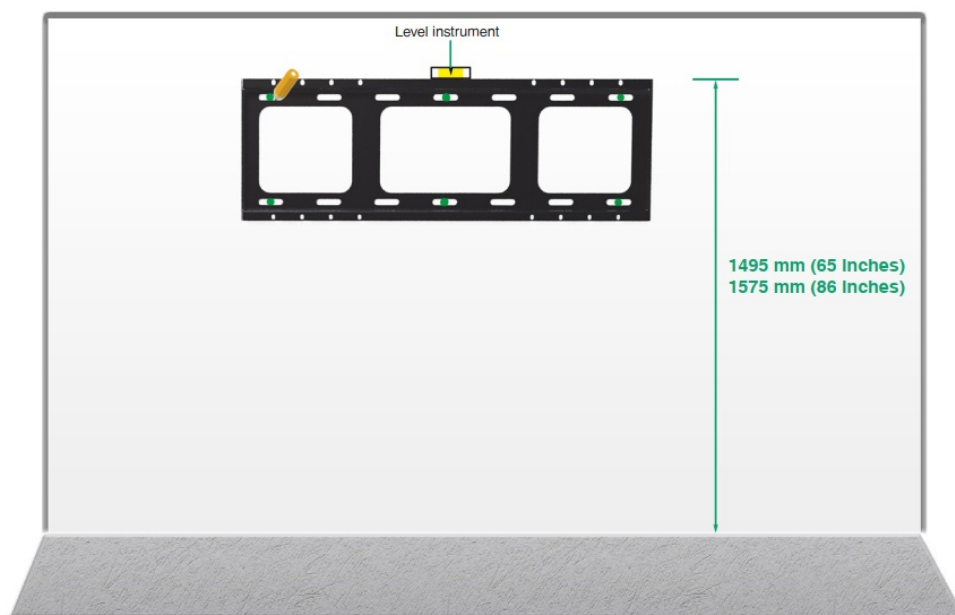


Take and place all components gently to avoid damage.



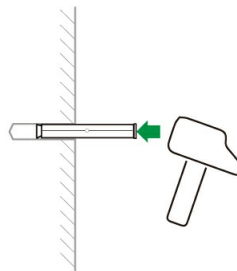
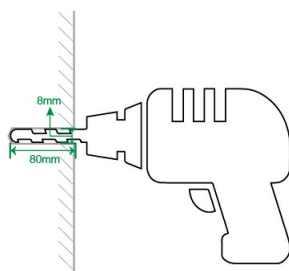
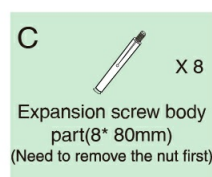
### 1. Determine wall-mounted bracket (a) installation position

1. Please install on a vertical, load-bearing solid wall or concrete wall (use expansion screw) or planks, other reinforced walls (use self-tapping screws) with more than 20 cm thickness.
2. For other type of walls, please reinforce the wall and verify the feasibility before installation. Verification method: Install a screw to carry out a single screw load test for 1 minute (MeetingBoard 65 load-bearing 35 kg, MeetingBoard 86 load-bearing 45 kg), and the installation can continue if the screw is not loose.
3. The wall-mounted bracket for MeetingBoard 65 and MeetingBoard 86 are only different in size, and the installation method is the same.
4. The installation height data is for reference only. You can choose a suitable position as needed.



- At least 6 screws for MeetingBoard 65. At least 8 screws for MeetingBoard 86.
- In recessed wall mount scenarios, 200 mm should be reserved between the sides and bottom of the MeetingBoard and the wall frame, and at least 200 mm should be reserved at the top to avoid affecting the sound quality (if MB-Camera is installed, additional space is required).

## 2. Fix the expansion screws/self-tapping screws at the marked positions on the wall



- If the wall is planks, other reinforced walls, install wall-mounted bracket with in-package self-tapping screws.

Methods: To install wall-mounted bracket, sleeve the self-tapping screw (6\*50mm) into the metal gasket, then drill it into the wall.

## 3. Install the wall-mounted bracket (a) to the wall

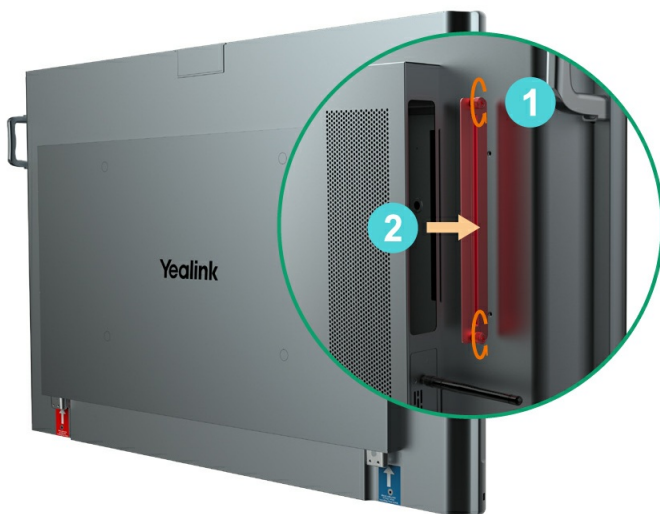


#### 4. Install Windows OPS (Optional)

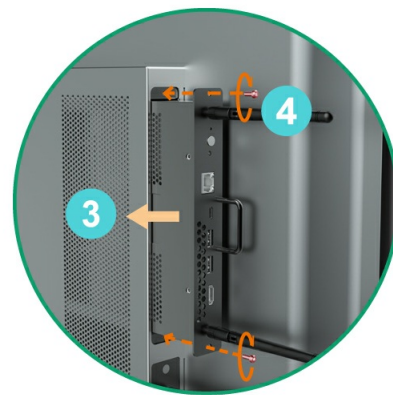
- i** 1. The endpoint has a built-in Android OS and supports installing OPS modules to use both Windows and Android OS.
2. Windows OPS is optional. If you have not purchased, skip this step.
3. When installing or uninstalling OPS, make sure that the endpoint is powered off. Otherwise, OPS may be abnormal.



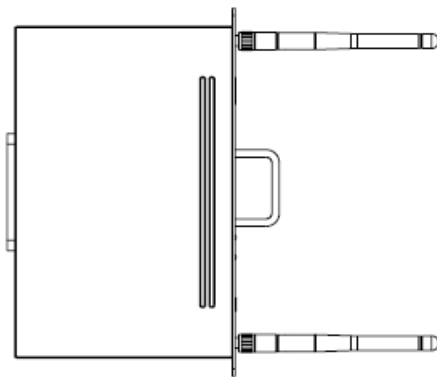
Remove the OPS cover




Insert the OPS and tighten the screws



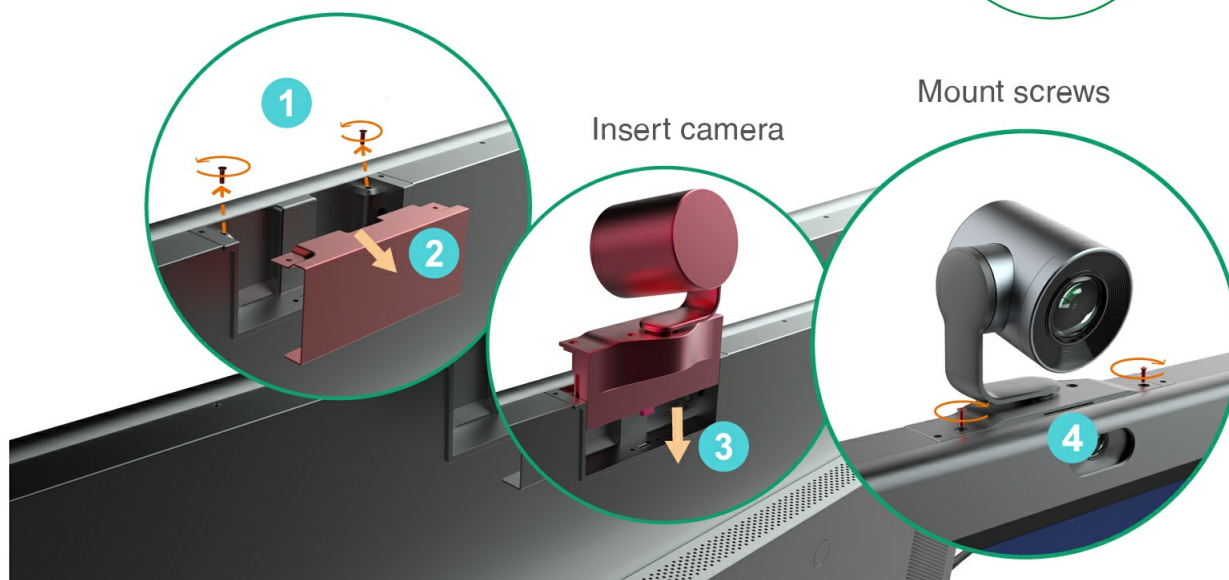
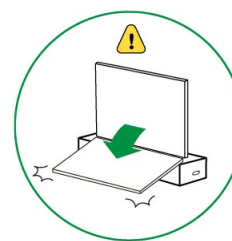
We recommend placing the OPS antenna as follows (this can maximize the signal strength):



#### 5. Install MB-CAM (Optional)

 MB-CAM is optional. If you have not purchased, skip this step.

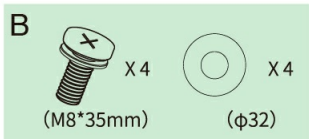
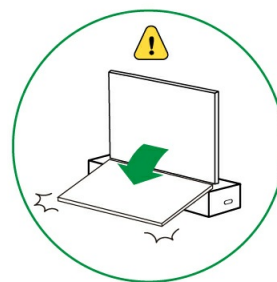
Remove the top cover of the endpoint



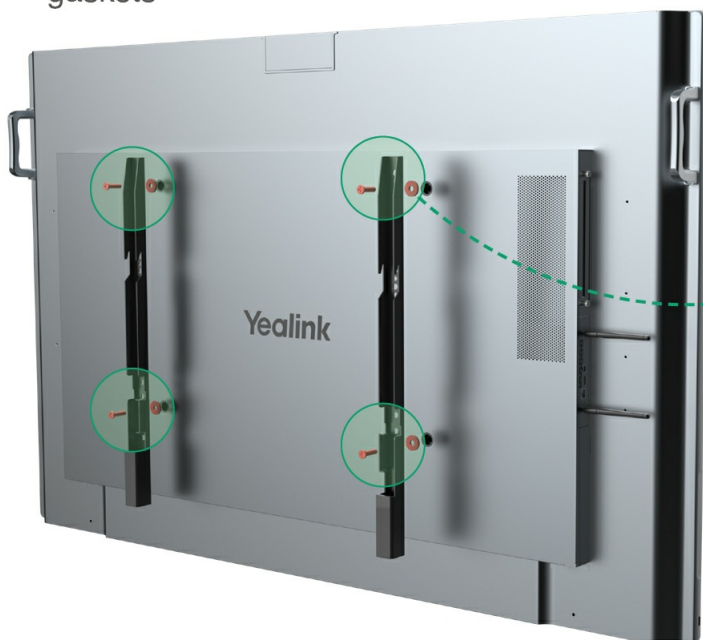
**6. Install wall-mounted bracket (b) on the back of the endpoint**



Tear the patch and remove the screws on the back of the endpoint



Put the rubber gasket on the back of endpoint, install the wall bracket (b) and lock the screws and gaskets

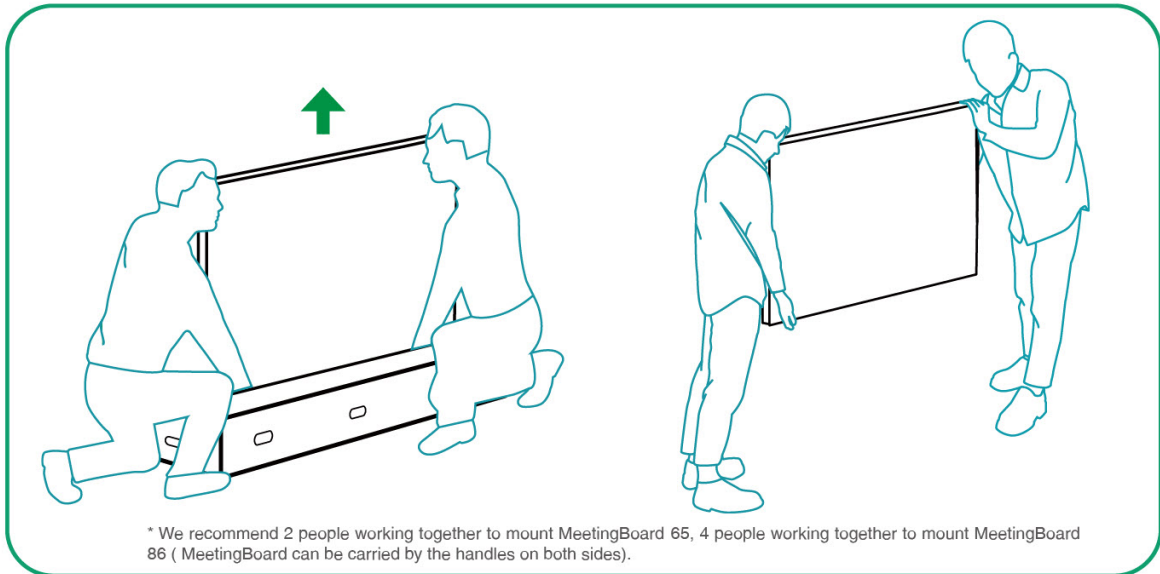


We recommended that the screw be installed to the third hole of the wall-mounted bracket (b)



**i** If the installation height is slightly inappropriate, you can adjust the installation hole position to meet your needs.

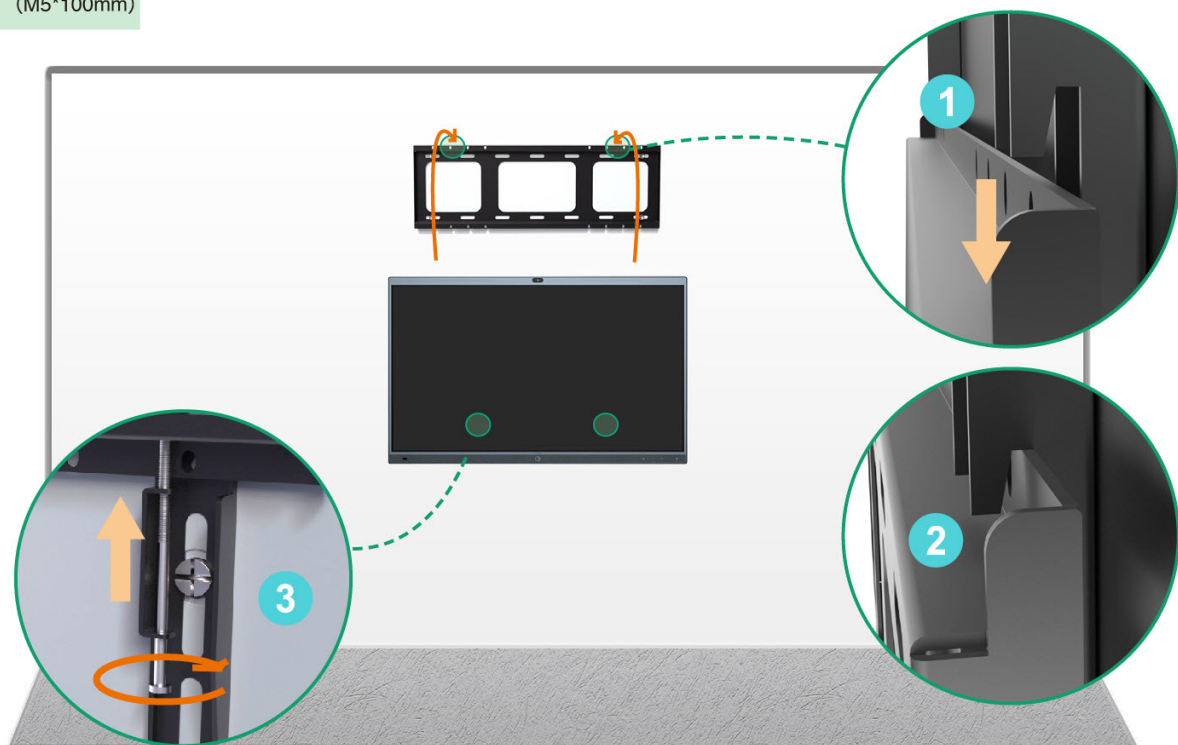
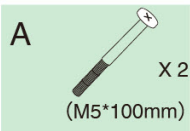
## 7. Mount the endpoint and lock the security screw on the back of the endpoint



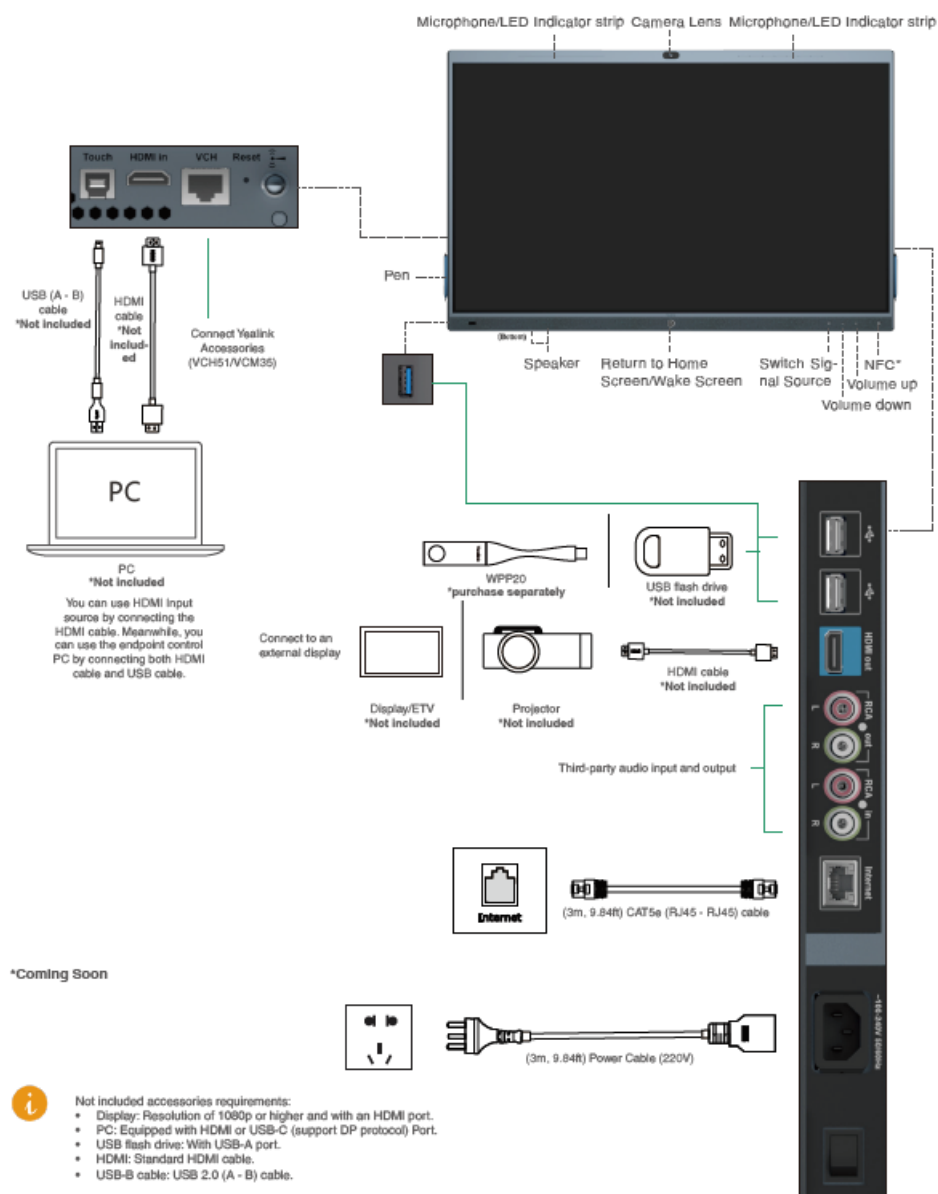
If the power port and network port of the conference room are located on the back wall of the endpoint to be installed, connect the cables first before installing the endpoint.



The wall-mounted bracket (b) on both sides need to be snapped into the slots at the same time.

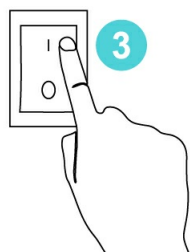


## Hardware Component Instructions




## Power On



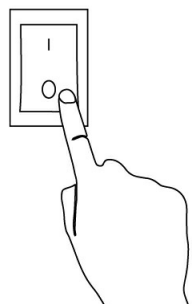


1. Insert the end of the power cable into the power port of the endpoint.
2. Insert the power cord plug into the outlet.
3. Turn the rocker switch button on the right rear of the endpoint to "I" to turn on the endpoint.

Upon first power-on of the endpoint, follow the on-screen setup wizard to configure language, time, network, etc., to initialize the configuration. The initialization operations vary with software versions.

 After the endpoint is started for the first time or restored to factory settings, go to settings on the touchscreen to configure the admin password (default password:0000).

## Power Outage



Turn the rocker switch button on the right rear of the endpoint to "O" to turn off the endpoint.

After installing the deployment, you can refer to [Quick Setup - Teams/Quick Setup - Zoom](#) to set up the large screen. After setup, please refer to [Quick Usage - Teams/Quick Usage](#) to learn about general functions.